

Shower Faucet Installation Manual

Precautions before installation:

- Prior to opening the product packaging, please ensure you read the company's product use information and maintenance knowledge.
- After opening the package, inspect all components for completeness. If any parts are missing or damaged, contact your local dealer immediately or reach out to our company for inspection and adjustment. Disassembly by non-professionals is not advised.
- Our company provides fully assembled product components. Before installation, clear out any impurities and sludge from the water supply pipes to prevent clogging of the product's water channels and aerators, which could affect its functionality.
- The operational water pressure for our faucet products is between 0.05-0.5Mpa, including both hot and cold water pressures. A recommended optimal water pressure is 0.3Mpa.
- The suitable maximum temperature for hot water used with our faucets should not exceed 85 degrees Celsius.
- This manual is applicable only to the installation steps for our standard hardware products. Installation and maintenance instructions for special specification products will be provided separately.
- Illustrations in this manual are for reference only; actual products should be referred to for accuracy. Should installation personnel encounter difficulties, please consult our company for assistance.
- After installation, installation personnel should return the manual and any attachments to the user for safekeeping and future maintenance reference.

Product Maintenance and Care

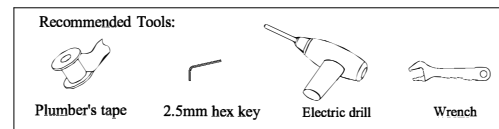
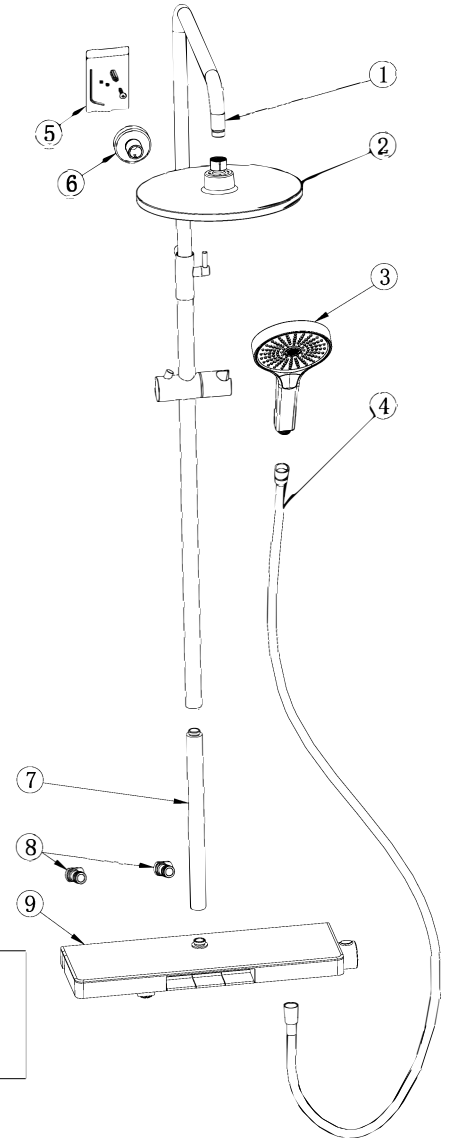
- Regularly clean the faucet's nozzle to prevent reduction in water flow due to clogging with impurities.
- If there is a decrease in the amount of water, please check whether the water pipe pressure is normal, whether the connection parts and the faucet nozzle are clogged with impurities.
- To maintain a clean and shiny surface:
 - ✓ Rinse with clean water and wipe down with a soft cloth.
 - × Do not use any abrasive cleaners, steel wool, or rough materials.
 - × Avoid using acidic cleaners or polishing abrasives.
- For extensive cleaning:
 - ① Use clean water and a soft cloth to remove surface dirt and films.
 - ② Recommended cleaning agents for removing surface dirt and films:
 - × Mild liquid detergents;
 - ✓ Colorless glass cleaners or non-abrasive powder cleansers that dissolve;
 - ✓ Polishing liquids without abrasive effects.
 - ③ After cleaning, rinse off all cleaning agents with water and dry off with a soft cloth.
 - ④ Regularly remove and clean the faucet's nozzle or output components to prevent output interference caused by impurities.



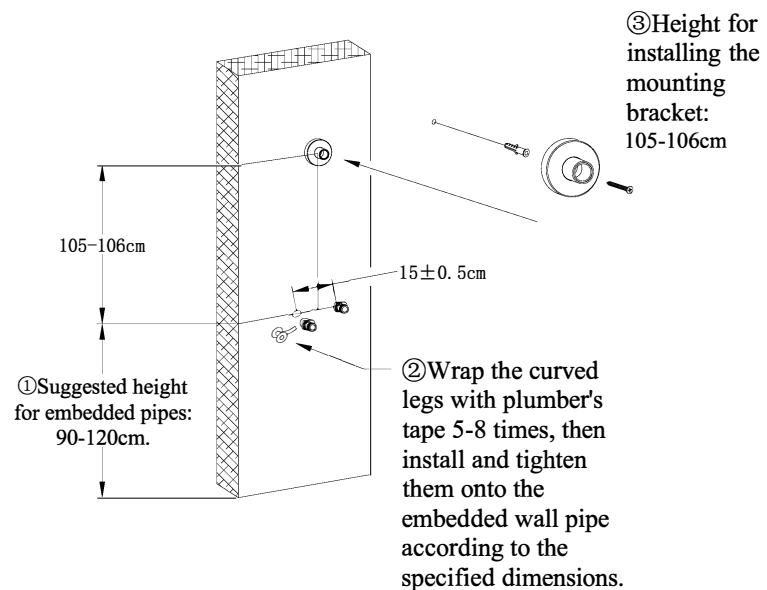
I. Products list:

1. Before construction please read the instruction book first.
2. After opening the package, check that the product is in good condition. Necessary tools are not provided with the product; please prepare your own.
3. Keep the manual safe as it contains important information.
4. Dimensional drawings in the manual are for reference only, refer to the actual product.

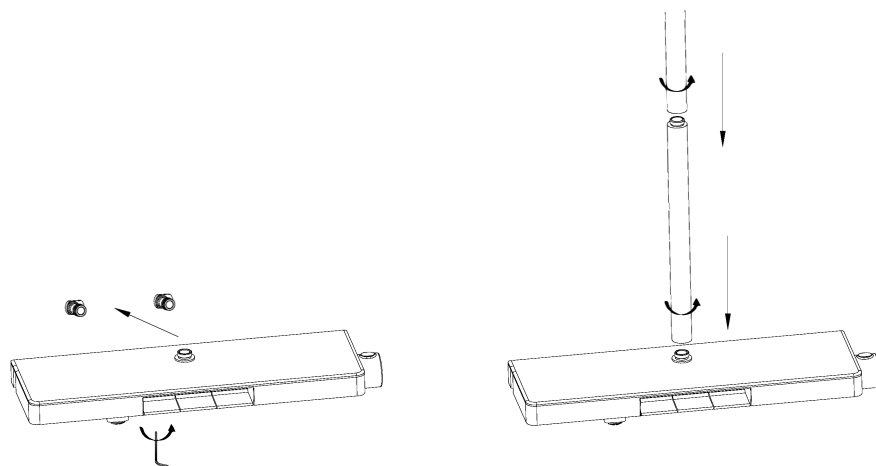
S/N	Name	Quantity
1	Shower Pipe Assembly	1
2	Shower Pipe Assembly	1
3	Hand Shower	1
4	Shower Hose	1
5	Screw Pack	1
6	Mounting Bracket	1
7	Extension Pipe	1
8	Curved Legs	2
9	Main Shower Faucet Body	1



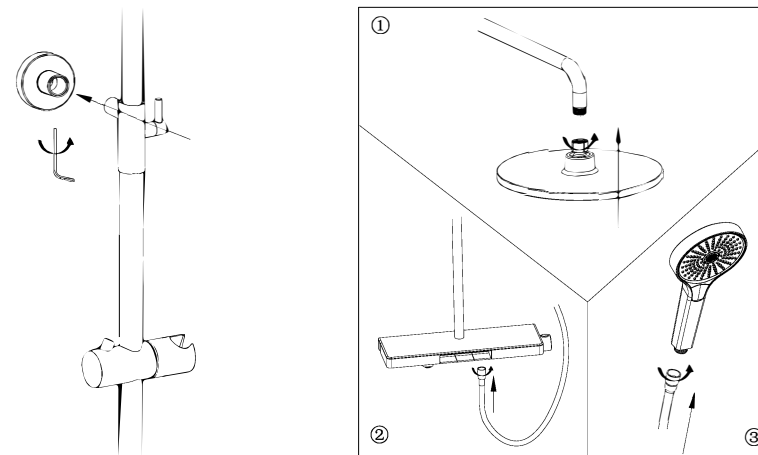
II. Pre-installation Fixed Dimensions for Wall Pipes:



III. Faucet Installation:



IV. Installation of spray pipe:



V. Finished Product Image:

